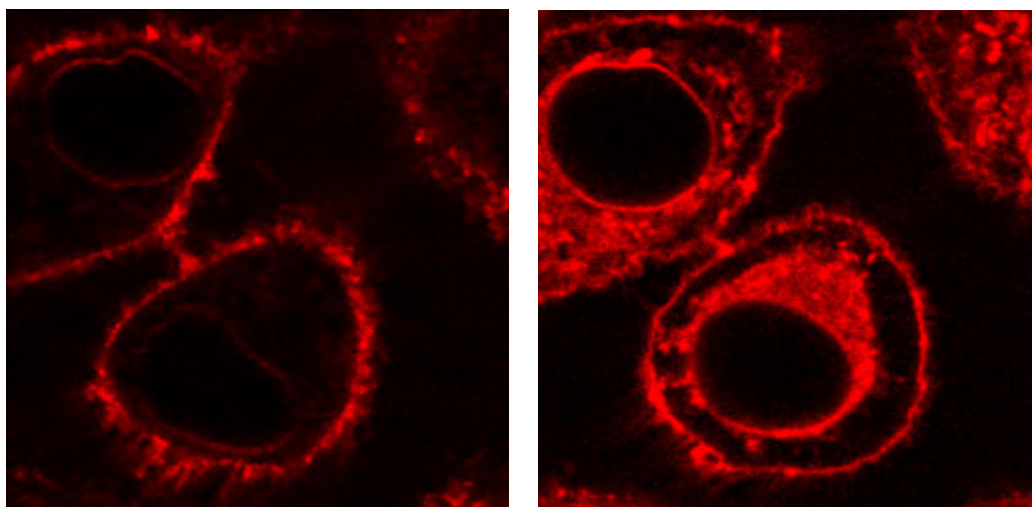


FM 1-43



Optimised for live HeLa cells grown in DMEM/5% FCS on WPI Fluorodishes.

Catalogue number: **F35355** (Invitrogen – Molecular Probes)

- Lipophilic styryl dye: stains plasma membrane and vesicles
- Used for endo/exocytosis studies, vesicle trafficking, etc.

(Labeling takes approximately 10 minutes)

Preparation of stock solution (1mM)

- i. Add 163ul water or DMSO to vial.
- ii. Mix and aliquot.

Preparation of working solution (5ug/ml)

- i. Dilute in HBSS without Ca/Mg (ice-cold), (e.g. 10ul + 1990ul ice cold HBSS without Ca/Mg).
- ii. Keep staining solution on ice.

Labelling protocol

- i. Remove culture medium and place Petri dish on ice.
- ii. Add ice-cold working solution while on ice for 1 minute.
- iii. Image immediately.