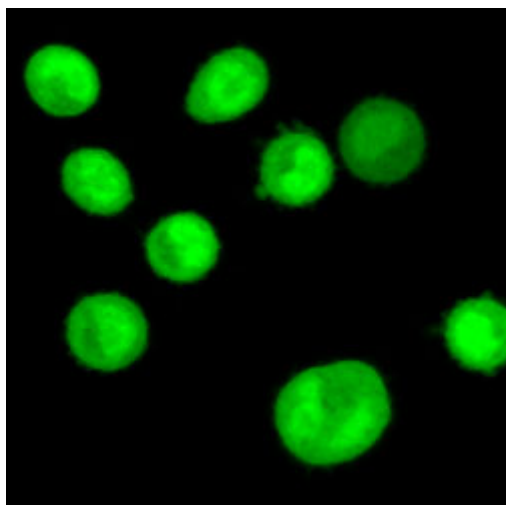


CellTracker Green (CMFDA)



Optimised for live HeLa cells grown in DMEM/5% FCS on WPI Fluorodishes.

Catalogue number: **C2925, C7025**, (Invitrogen – Molecular Probes)

- Stains viable cells.
- Fixable with aldehyde-based fixative.

(Labeling takes approximately 1 hour, 15 minutes)

Preparation of stock solution (10mM)

- Dissolve the lyophilised product in anhydrous DMSO.

Preparation of working solution (5uM)

- Dilute stock solution to final working solution of 5uM in serum-free medium (1ul stock solution + 1999ul medium).
- Warm working solution to 37 degrees Celsius.

Labelling protocol

- Remove medium from the dish and add pre-warmed working solution.
- Incubate for 30 minutes at 37 degrees Celsius in medium without serum.
- Remove labelling solution from dish and add fresh, pre-warmed medium.
- Incubate for 30 minutes at 37 degrees Celsius in medium without serum.
- Wash with PBS. Image as soon as possible.

Fixation protocol

- Fix with 3.7% formaldehyde in PBS for 15 minutes at Room Temperature.
- Wash with PBS. Mount.