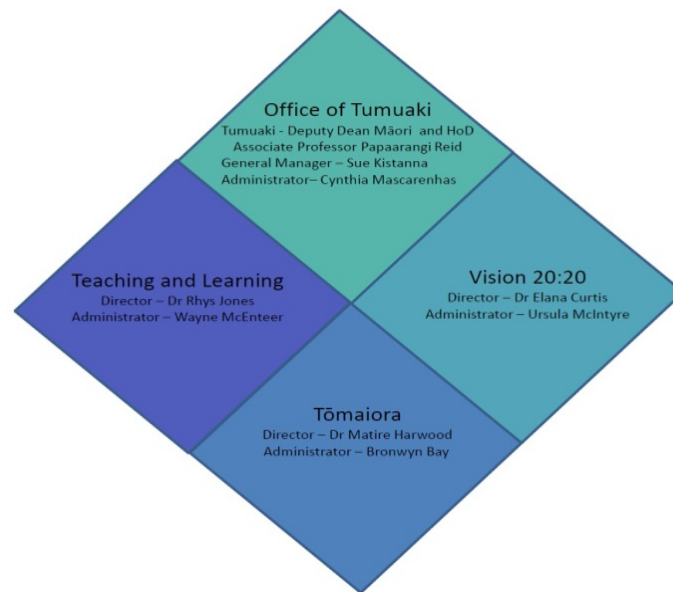


Introduction

Tōmaiora is the research arm of Te Kupenga Hauora Māori (TKHM). TKHM is responsible for teaching, building capacity and capability and undertaking research in Māori health within the Faculty of Medical and Health Sciences, at the University of Auckland. Established in 1997 and currently located at the Tāmaki campus, Tōmaiora aims to be a thriving kaupapa Māori research unit.



Tōmaiora's vision is to be **Leaders in Excellent Māori Health Research**; the Whakatauki **Rapua Te Mea Ngaro** or 'Seek the Evidence' was recommended by our Kaumatua/Kuia.

'**Leaders**' at Tōmaiora seek to be strategic, innovative, critically reflective and responsible. **Excellence** requires a critical, rigorous and transformative (in theory, method and outcomes) approach to the research we undertake. Our **research** is determined by Kaupapa Māori Theory and encompasses inquiry that is Māori-led, Māori-partnered, Māori-influenced.

Our people

Senior Staff



Assoc Prof Papaarangi Reid
Tumuaki - Deputy Dean Māori and
Head of Department



Dr Elana Curtis
Senior Lecturer Medical, Director
Vision 20:20



Dr Matire Harwood
Senior Lecturer, Director of
Tōmaiora



Dr Rhys Jones
Senior Lecturer, Medical



Dr Pat Neuwelt
Senior Lecturer, Public Health



Dr Anneka Anderson
Lecturer

New and emerging researchers



Erena Wikaire
Researcher



Kimiora Raerino
Māori Research Fellow



Anna Fay
PhD Student

Professional Staff








Bronwyn Bay
Senior Research Administrator

Kaumātua and Kuia



Julie Wade
Cultural & Community Liaison Te
Kupenga Hauora Māori

-  Rev Jim Rauwhero
-  Pio Wiremu Jacobs
-  Takawai Christina
Jacobs
-  Dolly Paul
-  Te Kaanga Skipper

	Activities
Projects	See Appendix A for a full list of research projects in 2013.
Publications in 2013	<ul style="list-style-type: none"> ▪ Gleeson, D., Lopert, R., & Reid, P. (2013). How the Trans Pacific partnership agreement could undermine PHARMAC and threaten access to affordable medicines and health equity in New Zealand. <i>Health Policy</i>, 112(3), 227-233. doi:10.1016/j.healthpol.2013.07.021 ▪ Curtis, E., & Reid, P. (2013). Indigenous Health Workforce Development: Challenges and successes of the Vision 20:20 programme. <i>ANZ Journal of Surgery</i>, 83(1-2), 49-54. doi:10.1111/ans.12030 ▪ McLellan, K. M., McCann, C. M., Worrall, L. E., & Harwood, M. L. N. "For Maori, language is precious. And without it we are a bit lost": Maori experiences of aphasia. <i>Aphasiology</i>, 0, 1-18. doi:10.1080/02687038.2013.845740 ▪ Patel, M., Pilcher, J., Pritchard, A., Perrin, K., Travers, J., Holt, S., . . . Harwood, M., . . . Black, P. (2013). Efficacy and safety of maintenance and reliever combination budesonide-formoterol inhaler in patients with asthma at risk of severe exacerbations: A randomised controlled trial. <i>The Lancet Respiratory Medicine</i>, 1(1), 32-42. doi:10.1016/S2213-2600(13)70007-9 ▪ Selak, V., Crengle, S., Elley, C. R., Wadham, A., Harwood, M., Rafter, N., . . . Rodgers, A. (2013). Recruiting equal numbers of indigenous and non-indigenous participants to a 'polypill' randomized trial. <i>Int J Equity Health</i>, 12, 44. doi:10.1186/1475-9276-12-44 ▪ Pilcher, J., Patel, M., Smith, A., Davies, C., Harwood, M., Weatherall, M., . . . Beasley, R. (2013). SINGLE BUDESONIDE/FORMOTEROL INHALER AS MAINTENANCE AND RELIEVER THERAPY IS BENEFICIAL IN MAORI ASTHMA. <i>RESPIROLOGY</i>, 18, 44. Retrieved from gateway ▪ Jones, R. G., Henning, M. A., Pinnock, R., Shulruf, B., & Hawken, S. J. (2013). Medical students' and clinical teachers' perceptions of Maori health teaching.. <i>N Z Med J</i>, 126(1377), 41-50. Retrieved from http://www.ncbi.nlm.nih.gov/pubmed/23831876 ▪ Raerino, K., Jones, R. G., & Macmillan, A. K. (2013). Indigenous Maori perspectives on urban transport patterns linked to health and wellbeing. <i>Health and Place</i>, 23, 54-62. doi:10.1016/j.healthplace.2013.04.007 <p>Chapter</p> <ul style="list-style-type: none"> ▪ Curtis, E. T., Reid, P., & Jones, R. (2013). Decolonising the academy: The process of re-presenting Indigenous health in tertiary teaching and learning. In F. Cram, H. Phillips, P. Sauni, & C. Tuagalu (Eds.), <i>Diversity in Higher Education</i>. New Milford: Emerald Books. <i>In press</i>. <p>Poster</p> <ul style="list-style-type: none"> ▪ Jones, P., Wells, S., Ameratunga, S., Stewart, J., Curtis, E., Reid, M. P., . . . Kumar, D. (2013). <i>Is the Shorter Stays in ED target associated with changes in other markers of quality of care?</i>. Poster session presented at the meeting of ADHB Celebration Week. Auckland City Hospital. <p>Report</p> <ul style="list-style-type: none"> ▪ Tenbensel, T. G., Edlin, R., Field, A., Walton, L., Neuwelt, P., McNeill, R., . . . Rees, D. (2013). <i>Evaluation of Auckland Regional After-Hours Network and the After-Hours Initiative</i>. Auckland. Retrieved from http://www.nzdoctor.co.nz/media/2217033/32166_final_report_phase_1_evaluation.pdf

Grants awarded in 2013	<ul style="list-style-type: none"> ▪ FRDF \$26,899 ‘<i>Whānau experiences of the diagnosis and management of Acute Rheumatic Fever for Māori children in Te Tai Tokerau, Aotearoa</i>’. Dr Anneka Anderson ▪ HRC Emerging Researcher Grant \$148,730 ‘<i>‘Acceptability’ and access to primary care: The reception process</i>’. Dr Pat Newult ▪ FRDF \$ \$147,617 awarded 31/12/2013 to Marcus Henning’s project ‘<i>The impact of Progress Testing in the University of Auckland MBChB program on students’ approaches to learning and levels of stress</i>’. Marcus Henning and Dr Rhys Jones ▪ HRC Project Grant \$1,198,563 ‘<i>Living well with a long term neurological condition</i>’. Prof Kath McPherson (AUT), Dr Matire Harwood and others ▪ HRC Feasibility Grant \$134,515 ‘<i>Home-therapy for the chronic stage of stroke recovery: A feasibility study</i>’. Dr Jim Stinear, Dr Matire Harwood and others ▪ NRA \$55,000 ‘<i>Lung Cancer Patient and Whānau Experience Project</i>’. Dr Rob McNeil, Dr Matire Harwood and others ▪ National Institute of Health Training Grant ‘<i>Mahina project: International Indigenous Health Research Training Program</i>’. Ms Everdina Fuli, A/P Papaarangi Reid and other UoA staff in collaboration with University of Hawaii, Manoa and University of Washington. ▪ UoA summer studentship, A/P Papaarangi Reid and Dr Mike Findlay
Awards	<p>Two HRC Fellowships were awarded in 2013 to students who will join Tōmaiora in 2014.</p> <ul style="list-style-type: none"> ▪ Eru Pomare Postdoctoral Fellowship to Dr Karen McLellan, University of Auckland. A kaupapa Māori intervention for stroke-related communication disorders. Grant for 42 months, \$371,514 ▪ Māori Health Research PhD Scholarship to Dr Jade Tamatea, University of Auckland. Te whakangungu rākau: prevalence, severity, outcome of thyrotoxicosis in Māori. Grant for 24 months, \$74,000
Collaborative Projects and Relationships	<p>Tōmaiora staff work collaboratively with a number of stakeholders including researchers at FMHS; within the University of Auckland; and with other national and international research organisations . A list of projects and names of organisations are provided in Appendix A. Key stakeholders include:</p> <ul style="list-style-type: none"> ▪ Ngāti Whātua ▪ Māori Research Network ▪ CoRE Development Team for Infectious Disease ▪ Ministry of Health ▪ Te ORA (Māori Medical Practitioners Association)
Conferences	<p>Tōmaiora staff attended a number of national and international conferences, either as keynote and invited speakers or having had abstracts accepted. These included:</p> <ul style="list-style-type: none"> ▪ Te Ohu Rata O Aotearoa Annual Scientific Meeting, Wellington ▪ Public Health Association, Australia ▪ The 7th National Aboriginal & Torres Strait Islander Male Health Convention, Brisbane Australia ▪ Medical Deans Annual Conference, Auckland ▪ 8th Health Services and Policy Research Conference, Wellington ▪ New Zealand Rehabilitation Conference, Nelson, New Zealand ▪ Stroke Society Conference, Darwin Australia ▪ Leaders in Indigenous Medical Education, Darwin Australia ▪ World Diabetes Conference, Melbourne Australia
Seminars for 2013	<p>Held the third Tuesday of every month at the School of Population Health, a list of seminar topics and speaker bios can be found on our website -</p>

	http://www.fmhs.auckland.ac.nz/faculty/tomaiaora/seminars/2013.aspx <ul style="list-style-type: none"> ▪ <i>Whānau Ora at the NHC – Case Study</i>, Dr Rawiri Jansen and Mr Kirk Marriner ▪ <i>Indigenous Health Workforce development</i>, Dr Elana Curtis ▪ <i>He whakarauora reo, he whakarauora tangata</i>, Ruakere Hond ▪ <i>Researching Māori Intergenerational trauma</i>, Drs Paul Reynolds and Cherryl Smith ▪ <i>Growing our own</i>, Jenna Clarke ▪ <i>Impact of ethnicity on Cardiac Admission with Thyrotoxicosis</i>, Dr Jade Tamatea ▪ <i>Māori Pathways to and Through Health care for STEMIs in New Zealand</i>, Ellie Tuzzolino-Smith ▪ <i>The Invisibility Majority in an Age of Disproportionality: How White Privilege Harms Us All</i>, Belinda Borrell ▪ <i>Street Homeless Māori Men – Forging and Maintaining Positive Relationships Through Gardening Activities</i>, Mohi Rua mā
Supervision	See Appendix A for a list of supervised research projects for 2013.
Meetings	Business meetings are held the first Tuesday of every month; these have formal agenda items and minutes taken. Senior Researcher meetings, the 2 nd Tuesday of the month and Emerging Research meetings the 4 th Tuesday of the month.
Website	The Tōmaiaora Website was updated in 2013. A new logo, designed by Mr Graham Tipene (Ngāti Whātua, Ngāti Hine, Ngāti Manu, Ngāti Kahu, Ngāti Haua) was commissioned for the launch of the new website. A mission statement and whakatauki for Tōmaiaora were also confirmed by the staff and kaumatua. See - http://www.fmhs.auckland.ac.nz/faculty/tomaiaora/default.aspx
Strategic Planning	Strategic Planning was undertaken in September 2013 with the Tūmuaki, Manager and other Directors at Te Kupenga Hauora Māori. Key strategic goals for 2014 are provided below.

Moving forward

2013 has seen significant development at Tōmaiaora with the appointment of a new Director. Over the past 12 months we have formalised operational processes, developed and nurtured significant networks, supported emerging researchers and had success in funding rounds and research outputs.

Key goals for 2014 are to:

1. Complete the University-led review of the 'research status' of Tōmaiaora.
2. Within the Tōmaiaora Māori Research Group, continue the critical discussions about the tensions between developing a portfolio of Māori-led research and participation as Māori investigators in the research activity of others.
3. Participate in grant applications as named investigators.
4. Support the development of individual research portfolios viewed in terms of academic career development and future PBRF analysis.
5. Continue to build relationships with other indigenous researchers internationally.

Appendix A: Research Projects at Tōmaiora 2013

Portfolio (Leader)	Project	Tōmaiora lead/s	Collaboration	
Teaching and Learning (RJ)	BDMM (Bias Decision Making in Medicine (E4E subproject)	EC and RJ	UoOtago	
	E4E	EC, RJ, PR	OoOtago	
	CertHSc Descriptive Article	EC		
	Diversity in Higher Education Monologue Chapter – ‘Decolonising the Academy’	EC, RJ, PR		
	The impact of Progress Testing in the University of Auckland MBChB program on students	RJ	FMHS UoA	
	Pharmacy and cultural competency	MH	School of Pharmacy	
Workforce development (EC)	Te Hā – MAP analysis	EC, EW	MoH	
	Te Hā – Total Cohort/CertHSc analysis	EC, EW		
	MAPAS Descriptive Article	EC		
	Tātou Tātou	EC, EW, PR		
Monitoring health inequities (AA)	Is New Zealand ready for an alternative measure of area-level disadvantage?	AA	SoPH	
	Chapter on Health Promotion	PR	PHA	
	Collaboration paper on Pharmac and TPPA	PR	Multiple	
Health Services (MH)	Toolkit development for people/whanau living with long term conditions	MH	AUT, CMDHB, etc	
	Lung cancer care pathways in northern DHBs	MH	NDSA, NCN	
	Health literacy for Māori/whanau living with CVD	MH	NIHI	
	Medication Adherence in primary care	PN, MH	Dept GP, UoA	
	Māori and aphasia	MH	School SLT, UoA	
	SMART – Symbicort for asthma	MH	MRINZ, Tu Kotahi	
	Stroke clinic feasibility study	MH	School of Physio, UoA	
	IMPACT	MH	NIHI	
	SSED – Shorter Stays in Emergency Department	EC, PR	EDs, SoPH	
	Determinants of fatal and hospitalised injuries in young and middle aged adults	PR	Dept Public Health, UoA	
	An internal examination of colorectal cancer management in NZ (PIPER)	PR	Dept Med, UoA	
	MoDERATE	PR	Dept Pub Health, UoA	
	Whānau experiences of the diagnosis and management of Acute Rheumatic Fever for Māori children in Te Tai Tokerau, Aotearoa.	AA	NDHB	
	Medical assistance to hasten death at the end of life: what are the views of older Maori?	AA		
	Acceptability and access to primary care: the reception process (pilot study, Manaia PHO)	PN		
	Acceptability and access to primary care: the reception process (main study, Auckland-based)	PN		
	ASH and community-based primary health care	PN	VUW	
	KM Theory and Practice (PR)	Why P in MAPAS?	EC, PR	
Te Ao Māori (RJ)	Marae Food Gardens	RJ, KR	Marae	
	Transport and Whanau Ora	RJ, KR		
Tōmaiora Graduate Research and Summer Studentships				
	Name	Supervision	Topic	Progress (Dec 2013)
Post doc	Karen McLellan	MH	Māori and aphasia	Pending PhD exam/HRC postdoc application successful
PhD/MD	Dr Elana Curtis	PR	Indigenous and Ethnic Minority Health Workforce Development: insights from Vision 20:20	Enrolled
	Anna Fay	PN, RJ	Social accountability and equitable health care practice in medical education	Yr1 presentation Sept 24th
	Kimiora Raerino	RJ	Marae Food Gardens	Yr 2
	Dr Jade Tamatea	PR, MH	Māori and thyrotoxicosis	Successful HRC Clinical PhD
	Rochelle Newport	EC	Vision 20:20 activity	Considering

	<i>Dr Rhys Jones</i>	<i>PR</i>	<i>Equity for Education programme</i>	<i>Considering</i>
Masters	Erena Wikaere	EC	WFD	Enrolled
	Rachel Tapera	AA, MH	Grandparents and infant feeding practices	Enrolled
	Kyle Eggleton	PN	Access to primary care	Enrolled
	Caitlin Harrison	RJ	Stereotype content in health professional education	Enrolled
	TBC	PR, AA	KM theory and ethics	To be advertised
	Carol Baker	PN	ASH a measure of primary care access: reliability/acceptability in the NZ health sector	S2 2013-S1 2014
Hons	Hannah Burgess	EC	Sub-analysis of PREDICT	Commence 2014, submit Nov 2014
SS	Ariana Andrews	PR	Colorectal cancer management in New Zealand (PIPER)	Commenced Dec 2013