

The University of Auckland School of Population Health

Global Health Group



Advancing knowledge through teaching, supervision, research and policy on global health issues, with a focus on Pacific and Asian regional health needs.

uniservices

 **THE UNIVERSITY
OF AUCKLAND**
NEW ZEALAND
Te Whare Wānanga o Tāmaki Makaurau

The globalisation of health determinants and health risks demands a global response. Health professionals of the 21st century require new knowledge, skills and ideas to tackle these challenges effectively.

The Global Health Group is uniquely placed to respond to Asia-Pacific regional health needs:

Our approach to global health is underpinned by strong values:

PARTNERSHIP

Working with like-minded organisations and individuals to achieve our mutual goals.

QUALITY

We are committed to robust and rigorous scientific research and teaching.

RESPECT

All people are treated with dignity and respect; valuing individuals and cultural differences and diversity.

INNOVATION

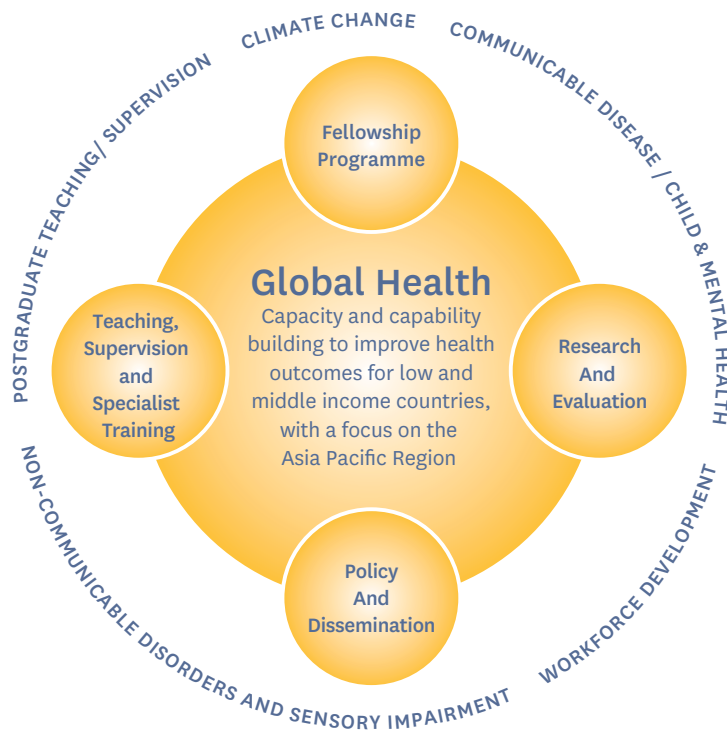
Fostering innovative research, teaching and practice is key to finding new solutions.

EQUITY

Seeking equity in access to and outcomes resulting from teaching and research.

SUSTAINABILITY

Ensuring that sustainability is at the heart of all our work.



- The Global Health Group at the School of Population Health (SoPH) is located at the Tamaki Campus, in the heart of Auckland, the largest Pacific city in the world.
- Established Pacific and Asian networks in New Zealand and throughout the Asia - Pacific region,
- Geographical position in the hub of the Asia - Pacific region (a logical and practical trans-Pacific base),
- World class research, training and supervision expertise in the health of Pacific and Asian peoples, and global health more generally,
- Access to a unique mixture of skills and disciplines in the SoPH and broader University in numerous fields that can contribute to multidisciplinary research and teaching initiatives in the Asia - Pacific region.
- Capacity to respond to and grow the demand for global health training in the Pacific and in Asia.



Key People

Members of the Global Health Group are recognised for their contributions to the fields of chronic disease prevention, climate change and health, health systems, Pacific health, primary care, child and youth health, injury prevention and control, and disability and rehabilitation.



Dr. Judith McCool

Senior Lecturer, Global Health
Email: j.mccool@auckland.ac.nz

Specialist field

Tobacco control, mass media and health, social determinants of health.

Recent Projects (2008-)

Progressing tobacco control in Niue. Analysis of tobacco promotions and advertising in the Pacific Islands countries (PICs). A review of NCD prevention and control in the Pacific. Youth perceptions of the graphic warning labels and plain packaging.



Dr. Teuila Percival

Head of Pacific Health
Email: t.percival@auckland.ac.nz

Specialist field Pacific People's Health, child health, rheumatic heart disease, disability, obesity prevention, Programme Evaluation.

Recent Projects (2008-)

NZ Non-regulated Pacific Health workforce review. Pacific Pathways to Sexual Violence Prevention. Pacific child health indicator project. Obesity prevention in the Community (OPIC 1 and 2). Climate Change and Health in Samoa.



Associate Professor Chris Bullen

Director, Clinical Trials Research Unit
Email: c.bullen@auckland.ac.nz

Specialist field Housing and health, tobacco control and smoking cessation, evaluating public health interventions, population health education.

Recent Projects (2008-)

Progressing tobacco control in Niue. Tobacco control, smoking cessation and tuberculosis in China.



Professor Alistair Woodward

Head, School of Population Health
Email: a.woodward@auckland.ac.nz

Specialist field

Public health, environmental health, tobacco control, climate change.

Recent Projects (2008-)

Adapting to climate change: small island states. Estimating the public health benefits of measures to reduce greenhouse gas emissions. The global burden of disease due to second hand smoke.



Professor Shanthi Ameratunga

Deputy Head, School of Population Health
Email: s.ameratunga@auckland.ac.nz

Specialist field Epidemiology, injury, trauma research and outcomes, disability and rehabilitation, youth health.

Recent Projects (2008-)

Project director of the Traffic Related Injury in the Pacific (TRIP) project. Risk factors for fatal and serious non-fatal injuries among New Zealanders. National Youth Health Surveys (Youth2000 and Youth'07). Cardiovascular disease risk in South Asian people (PREDICT project).



Professor Peter Thorne

Email: pr.thorne@auckland.ac.nz

Specialist field Sensory disability, particularly hearing loss, occupational hearing loss and injury prevention, sensory rehabilitation.

Recent Projects (2008-)

Biomedical research into development of the inner ear and prevention of noise induced hearing loss. Development of a hearing loss screening programme in Samoa.





Other key members of the global health team

Dr. Vili Nosa

Email: v.nosa@auckland.ac.nz

Specialist field

Pacific people's health, alcohol harm, tobacco control, tropical diseases.

Professor Robert Beaglehole

Email: r.beaglehole@auckland.ac.nz

Specialist field

Public health, tobacco control, chronic disease prevention and control, global health.

Professor Ruth Bonita

Email: r.bonita@auckland.ac.nz

Specialist field

Public health, chronic disease prevention and control; stroke prevention.

Associate Professor Robert Scragg

Email: r.scragg@auckland.ac.nz

Specialist field

Epidemiology, Public health interventions, tobacco control, noncommunicable disease, vitamin D & health.

Dr. Peter Huggard

Senior Lecturer, Director-Goodfellow Unit

Email: p.huggard@auckland.ac.nz

Specialist field

Communication studies, health workforce vicarious traumatisation and burnout, counselling.

Dr. Graeme Lindsay

Public Health Specialist

Email: g.lindsay@auckland.ac.nz

Specialist field

Climate change and health, transportation, sustainability.

Dr. Amritha Sobrun-Maharaj

Director, Centre for Asian Health Research and Evaluation

Email: a.sobrun-maharaj@auckland.ac.nz

Specialist field

Development of Asian Health research and evaluation.

Auckland UniServices Ltd

Auckland UniServices Limited is the largest research and development company of its kind in the Southern Hemisphere and a wholly owned company of The University of Auckland.

By connecting its clients with The University's brightest academic minds, UniServices provides commercial organisations the innovative technologies they seek, and governments the national programmes they need. The results can mean huge strides in a company's international competitive edge, or in a country's health, education and welfare capability.

UniServices manages all of The University's intellectual property and is responsible for all research-based consultancy partnerships and commercialisation.

UniServices' open innovation and world-class thinking can change the world.

Kerry Price

Business Manager, Population Health

+64 9 923 6567

k.price@auckland.ac.nz

Auckland UniServices Limited

Level 10, UniServices House,

70 Symonds Street, Auckland

Private Bag 92019 AMC, Auckland 1142, New Zealand

www.uniservices.co.nz